

FINE QUALITY
FOR THE PROFESSIONAL

Jostens Fine Quality Regalia is tailored to ensure
the gown reflects the magnitude of the achievement.

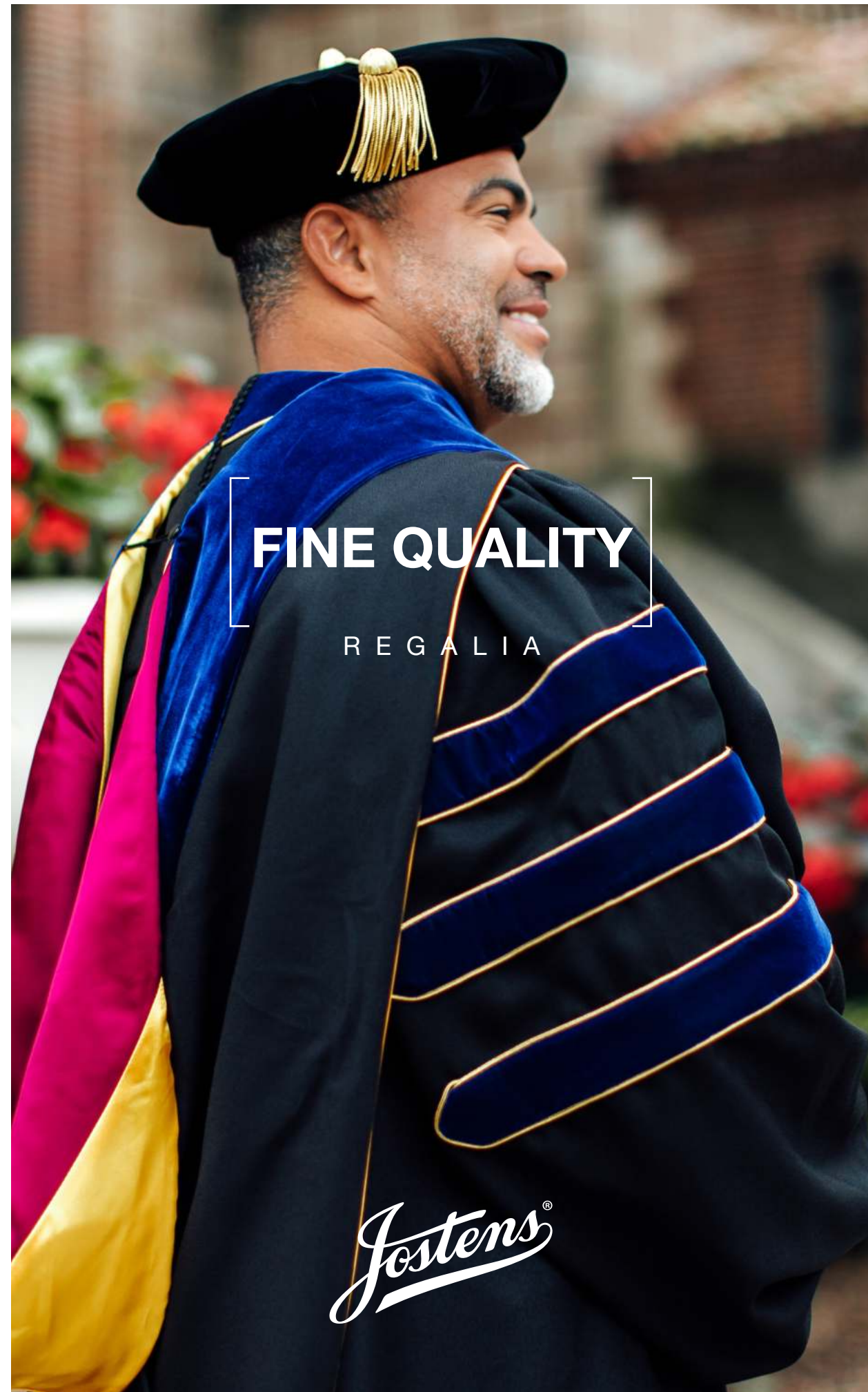
FOR ORDERING AND MEASURING INSTRUCTIONS
visit [jostens.com/regalia](https://www.jostens.com/regalia)

Jostens[®]

CELEBRATING MOMENTS THAT MATTER™

1.800.854.7464

©2019 Jostens, Inc. 190486 (CCG-096)



[FINE QUALITY REGALIA PACKAGES]

FINE QUALITY MADE EASY

HISTORY OF ACADEMIC CODE

Academic regalia has a history dating back to the 14th century, when universities were being established. The tradition of wearing academic regalia in the United States dates back to the Colonial Colleges period, and was heavily influenced by European practices and styles. The assignment of colors to signify certain disciplines was developed in the late 19th century in the United States.

Congratulations on your achievement! You now belong to an elite group of professional educators. Jostens is proud to offer this special collection of Fine Quality Regalia packages for the professional educator. Faithful to the time-honored traditions detailed in the Academic Costume Code and Ceremony Guide. Jostens celebrates academic achievement and represents excellence in style and quality with universally accepted fine quality regalia.

Jostens partners with numerous Colleges and Universities to establish their own official Fine Quality Regalia. To see if your university offers an official gown, contact 1.800.854.7464.

Jostens[®]



THE WINDSOR PACKAGE

Package includes your initials inside gown, tam and hood.
Garment bag and wooden hanger.

OUR PREMIER GOWN FOR DOCTORAL DEGREES

An investment in the Windsor gown is an investment in the finest quality regalia. Elegantly crafted to last the span of your career. The Windsor gown provides the highest attention to detail and elegance.

GOWN DETAILS

*Polyester prestige crepe
Black fabric gown.*

*Pleated yoke with fluting
on shoulders and back.*

Black piping on neck edge.

*Regal braid and button
on back yoke.*

*Finest available velvet
chevrons and floating
front panels.*

*Floating front panels
designed to be worn
open with a tab closure
or zipped.*

*Satin-lined sleeves with
adjustable French cuffs
and cufflinks.*

*Pockets and access
openings on both sides.*



Example shown: Doctor of Philosophy (Ph.D.—royal blue velvet) with purple and gold school color satin lining.



**VELVET COLOR OPTIONS
ON GOWN AND HOOD:**
Finest available black, royal blue
or degree colors.



HOOD DETAIL:
Shell made of black polyester
prestige crepe fabric and the finest
available degree color velvet.
The satin lining is in school
colors per university guidelines.
Includes cord with button, and
hood attachment cord.



CHEVRON DETAIL:
Metallic gold, metallic silver, or
degree color piping on velvet
chevrons and panels.



TAM:
Premier 8 sided tam made of
the finest available black or
royal blue velvet.
Tam includes a gold bullion tassel.

See page 12 for degree velvet colors.

THE SUSSEX PACKAGE

Package includes your initials inside gown.
Garment bag and wooden hanger.

OUR MOST POPULAR GOWN FOR DOCTORAL DEGREES

Designed for comfort and quality.
The Sussex gown is the regalia package for the professional educator.



GOWN DETAILS

Revive™, 100% recycled polyester, sustainable black fabric gown.

Classic yoke with fluting on shoulders and back.

Decorative cord and button on back yoke.

Velvet chevrons and front panels.

Metallic gold piping on velvet chevrons and panels.

Concealed center zipper.

Satin-lined bell sleeves.

Left pocket and access on right side.

Example shown: Doctor of Philosophy (Ph.D.—royal blue velvet) with gold and royal blue school color satin lining.



VELVET COLOR OPTIONS ON GOWN:
Black, royal blue and light blue only.



HOOD DETAIL:
Constructed of Revive™, 100% recycled polyester sustainable black fabric and degree color velvet.
The satin lining is in school colors per university guidelines.
Includes cord with button, and hood attachment cord.



TAM:
Premier 8 sided tam with gold bullion tassel.

See page 12 for degree velvet colors.



THE BRISTOL PACKAGE

Package includes garment bag and wooden hanger.

OUR ENTRY LEVEL GOWN FOR DOCTORAL DEGREES

Designed for comfort and quality. The Bristol gown provides a high quality look at an affordable price.

GOWN DETAILS

Revive™, 100% recycled polyester, sustainable black fabric gown.

Decorative cord and button on back yoke.

Classic yoke with fluting on shoulders and back.

Black velvet chevrons and front panels.

Cuffs with Velcro adjustment.

Left pocket.



Example shown: Doctor of Education (E.D.)—light blue velvet with gold and white school color satin lining.



HOOD DETAIL:

Constructed of Revive™, 100% recycled polyester sustainable black fabric and degree color velvet.

The satin lining is in school colors per university guidelines.

Includes cord with button, and hood attachment cord.



TAM:

Premier 6 sided tam with gold silky tassel.

See page 12 for degree velvet colors.



THE MASTER PACKAGE

Package includes garment bag and wooden hanger.

GOWN DETAILS

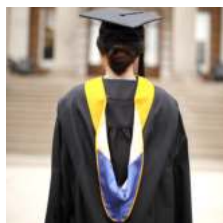
Revive™, 100% recycled polyester sustainable black fabric gown.

Decorative cord and button on back yoke.

Classic yoke with fluting on shoulders and back.

Classic front panels with center zipper.

Left pocket.



HOOD DETAIL:

Constructed of Revive™, 100% recycled polyester sustainable black fabric and degree color velvet.

The satin lining is in school colors per university guidelines.

Includes cord with button, and hood attachment cord.



CAP:

Deluxe quilted mortarboard cap with black or degree color tassel.

DEGREE VELVET COLORS*

The velvet trimmings of doctoral gowns and band of the hood signify the degree and discipline being studied. The velvet band on a master hood is 3 inches, while doctoral hoods have a 5 inch velvet band.

Each academic discipline is assigned a velvet color. Red, is one of the traditional colors of the church and is used for theology, where green, the color of medieval herbs is used for medicine. Doctors of Philosophy (Ph.D.) degree holders traditionally wear Royal Blue to represent the mastery of the discipline in any field. Below you will find the associated discipline colors.

Maize Agriculture	Blue Violet Architecture	White Arts, Letters, Humanities	Drab Business, Commerce, Accountancy,	Lilac Dentistry	Copper Economics	Light Blue Education
Orange Engineering	Brown Fine Arts, including Landscape Architecture	Russet Forestry	Crimson Journalism, Human Environmental science	Purple Law, Criminal Justice	Lemon Library Science	Green Medicine
Pink Music	Apricot Nursing	Slate Occupational Therapy	Silver Oratory (Speech)	Olive Pharmacy	Royal Blue Philosophy	Sage Physical Education
Teal Physical Therapy	Peacock Public Administration incl Foreign Service	Salmon Public Health	Gold Science	Citron Social Work	Red (Scarlet) Theology	Gray Veterinary Science, Chiropractic

*Color shades may vary from finished product and may vary by university guidelines.

Jostens Customer Service: 1.800.854.7464.